

Voyager One

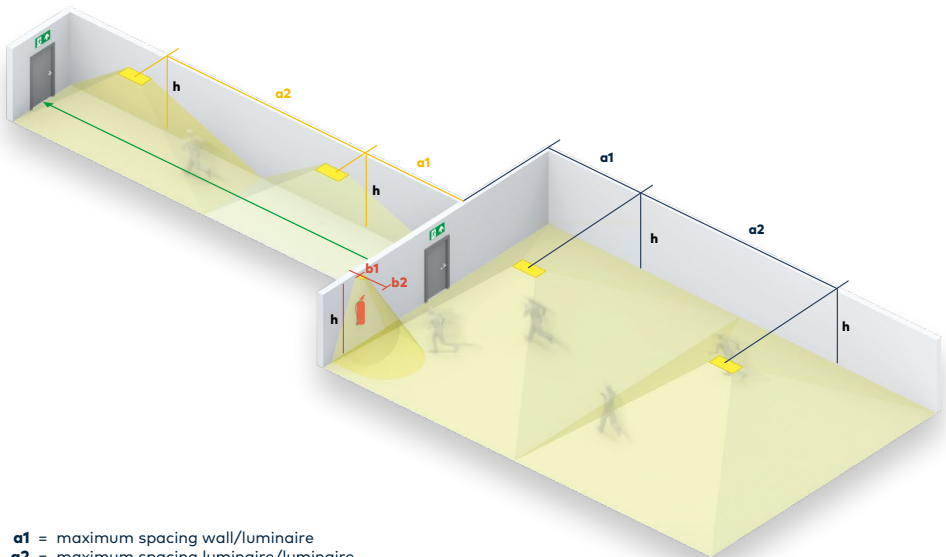
96631601/96631602

VOYAGER ONE MS ANT HP ECC/ECS WH IP65

without lens



www.thornlighting.com/VOYO



- a1** = maximum spacing wall/luminaire
- a2** = maximum spacing luminaire/luminaire
- b1** = minimum spacing object/luminaire
- b2** = maximum spacing object/luminaire
- h** = ceiling height

a1/a2 spacing values valid for longitudinal and transversal axis of luminaire
All values in metres, all values for $t_a = 30\text{ }^\circ\text{C}$, maintenance factor = 0.8

*Determine a1/a2/b1/b2 figure by means of lighting calculation (taking adjacent luminaires into account)

Voyager One

96631601/96631602

VOYAGER ONE MS ANT HP ECC/ECS WH IP65
without lens

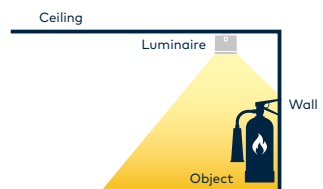


www.thornlighting.com/VOYO

h	antipanic (0,5 lx)		antipanic (1 lx)		h	antipanic (0,5 lx)		antipanic (1 lx)	
	a1	a2	a1	a2		a1	a2	a1	a2
2,50	4,00	10,95	3,95	10,85	17,00	6,55	30,50	*	22,05
3,00	4,80	13,15	4,25	12,20	18,00	6,00	30,85	*	21,60
3,50	5,55	15,30	4,50	13,30	19,00	5,30	31,15	*	20,85
4,00	5,85	16,65	4,75	14,20	20,00	4,35	31,30	*	19,35
4,50	6,15	17,85	4,95	15,00	21,00	2,90	31,35	*	18,05
5,00	6,45	18,90	5,15	15,70	22,00	*	31,40	*	16,90
6,00	6,90	20,65	5,40	17,00	23,00	*	31,35	*	15,75
7,00	7,25	22,10	5,55	18,10	24,00	*	31,20	*	14,60
8,00	7,55	23,45	5,55	19,05	25,00	*	30,80	*	13,50
9,00	7,70	24,65	5,45	19,85	26,00	*	30,20	*	12,30
10,00	7,85	25,75	5,30	20,55	27,00	*	29,25	*	10,90
11,00	7,85	26,70	5,05	21,10	28,00	*	27,75	*	9,40
12,00	7,80	27,55	4,65	21,55	29,00	*	26,45	*	7,60
13,00	7,70	28,30	4,05	21,90	30,00	*	25,20	*	5,05
14,00	7,55	29,00	3,20	22,10	31,00	*	24,00	*	*
15,00	7,30	29,60	1,70	22,20	32,00	*	22,85	*	*
16,00	6,95	30,10	*	22,20	33,00	*	21,75	*	*

SPOT: luminaire must be positioned transversely in front of object

h	spot (5 lx)	
	b1 (min. dist.)	b2 (max. dist.)
2,50	0,40	3,00
3,00	0,65	3,60
3,50	1,10	3,55



a1/a2 spacing values valid for longitudinal and transversal axis of luminaire
All values in metres, all values for $t_a = 30^\circ\text{C}$, maintenance factor = 0,8

*Determine a1/a2/b1/b2 figure by means of lighting calculation (taking adjacent luminaires into account)