

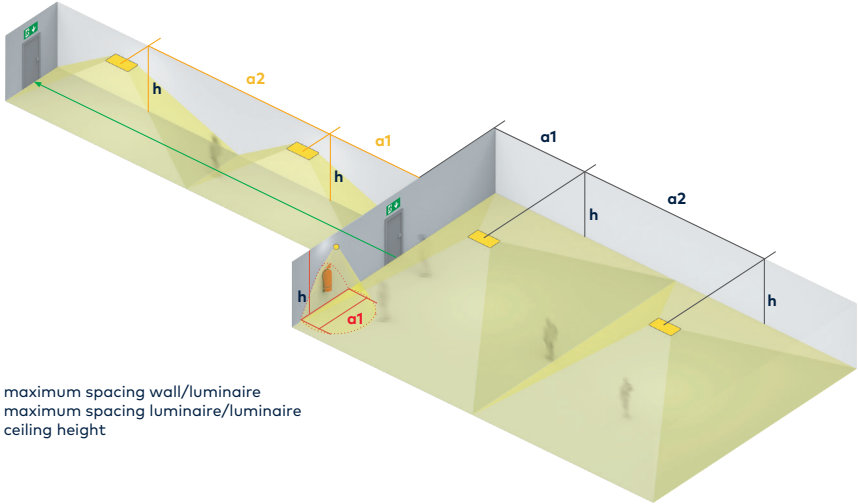
Voyager

LED Series E3TX



www.thornlighting.com/VYLD

Discrete, high performance,
LED emergency lighting



a1 = maximum spacing wall/luminaire
a2 = maximum spacing luminaire/luminaire
h = ceiling height

VOYAGER C LED AREA E3TX

h	antipanic (0,5 lx)	
	a1	a2
2,50	2,90	9,40
3,00	2,35	10,35
3,50	1,25	11,20
4,00	0,70	11,20
4,50	*	10,50
5,00	*	10,00

VOYAGER C LED ROUTE E3TX

h	escape (1 lx)	
	a1	a2
2,50	6,00	13,90
3,00	6,65	15,50
3,50	7,05	16,95
4,00	7,15	18,25
4,50	5,70	19,35
5,00	1,55	18,60

VOYAGER C LED SPOT E3TX

h	spot (5 lx)
	a1
2,50	2,30
3,00	2,50
3,50	2,60
4,00	2,50
4,50	2,20
5,00	*

All values in metres, all values for $t_a = 30\text{ }^\circ\text{C}$, maintenance factor = 0.8

* Determine a1 figure by means of lighting calculation (taking adjacent luminaires into account)